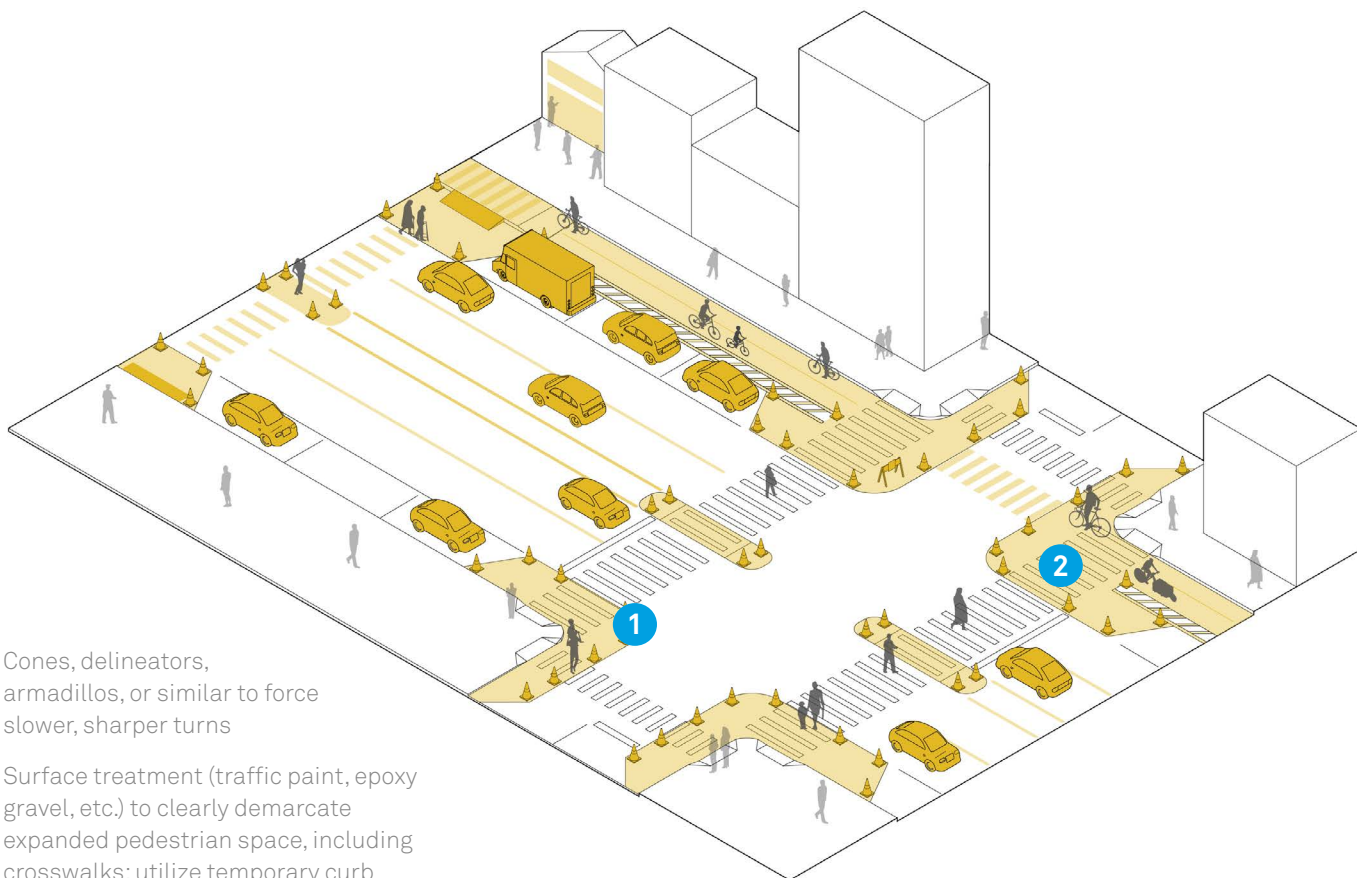


SAFE CROSSINGS



- 1 Cones, delineators, armadillos, or similar to force slower, sharper turns
- 2 Surface treatment (traffic paint, epoxy gravel, etc.) to clearly demarcate expanded pedestrian space, including crosswalks; utilize temporary curb ramp for accessibility

Improve crossings to help people walk/bike safely given increased volumes and changing travel patterns.

CONTEXT

- Crossings at or near essential services (pharmacies, hospitals, grocery stores, transit stops, parks, etc.)
- Mid-block locations with high crossing demand, especially on multi-lane streets.
- Streets with transit stops at unsignalized locations, fast or high-volume traffic, and/or high crash rates.

KEY STEPS

- Use vertical elements to delineate curb extensions or refuge islands.
- Shorten crossing distance and reduce speeding by repurposing or narrowing vehicle lanes.
- Apply reflective traffic tape or paint to delineate pedestrian space and increase crosswalk visibility.

TIMELINE: Days.

DURATION: Weeks, months, years.



Credit: @MedySejai

Montreuil, France

Montreuil created safer conditions for pedestrians by implementing a painted crosswalk and refuge island outlined with flex posts.

Planning

- Identify streets or intersections with safety/accessibility challenges, such as missing crosswalks, long crossings, or large gaps between marked crossings; create/upgrade crossings at locations with high pedestrian demand and desire lines.
- Prioritize underserved neighborhoods, essential employment or service sites, and transit stops.

Engagement

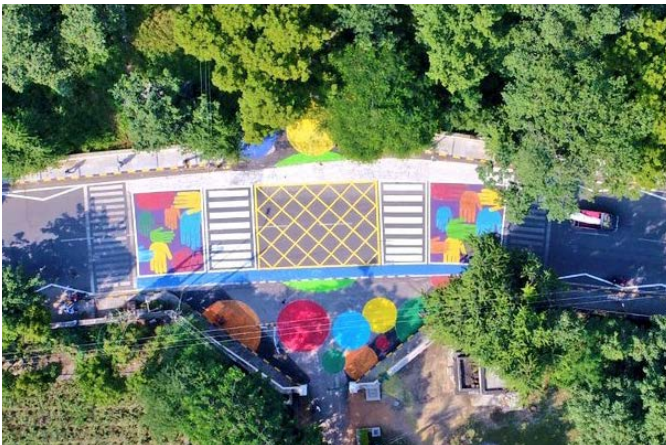
- Leverage existing communications networks and social media channels.
- Work with road safety advocacy groups, universal accessibility groups, and other local associations. Post notices on site, online, and in newsletters to inform and solicit feedback from the community.
- Place health notices close to crossings for visibility.
- For reprogrammed actuated signals, cover push-buttons with signs noting that pushing is unnecessary.

Design + Implementation

- Extend sidewalk or median curbs into parking lane or intersection to reduce length of pedestrian and bike crossings to reduce exposure of unprotected users.
- Prioritize heavy separation materials at endcap locations, at intersections with high vehicular and/or pedestrian volumes, and other sensitive locations.
- For intervals of months or years, consider installing modular plastic, rubber, or concrete refuge islands.
- Retain recently-shortened signal cycles and set pedestrian signals to recall to reduce pedestrian crowding at corners as activity levels rise.

Monitoring

- Key criteria: pedestrian volumes, demand, crashes/conflicts, and desire lines.
 - Monitor pedestrian crossing on and outside the crosswalk, and adjust crossing location or design to accommodate safe and physically distant crossing for pedestrians.
-



Credit: @0to5ChildDevp

Udaipur, India

The Udaipur Municipal Corporation created a pleasant and safe surrounding for caregivers and children to walk to school.



Credit: Anda Chu /Bay Area News Group

Oakland, CA, USA

Oakland used cones to increase pedestrian visibility at crosswalks, helping people walk to essential services such as grocery stores, food distribution sites and coronavirus testing sites.